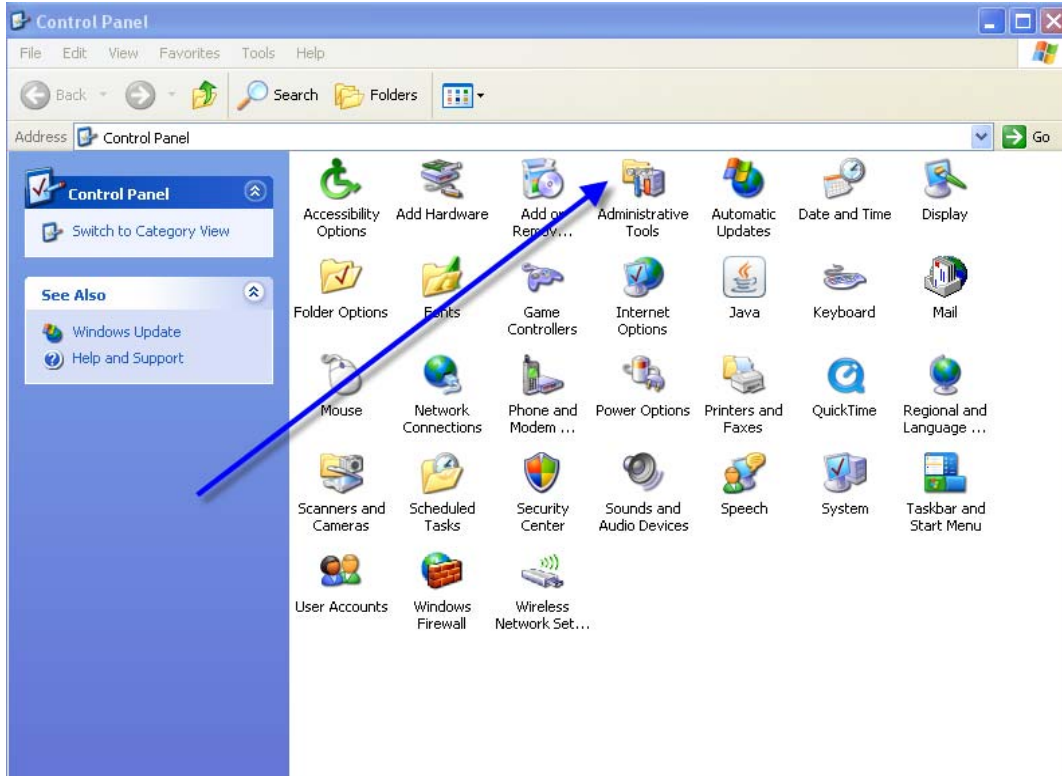
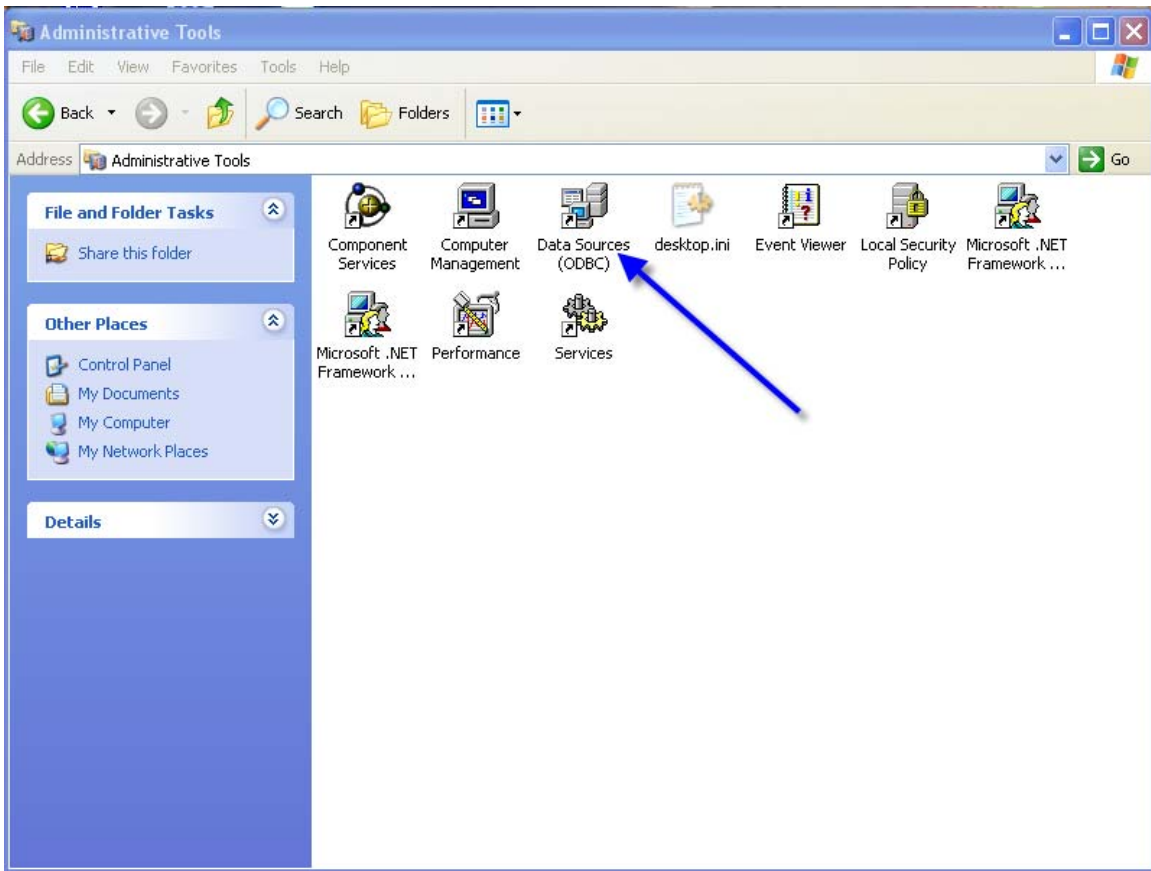


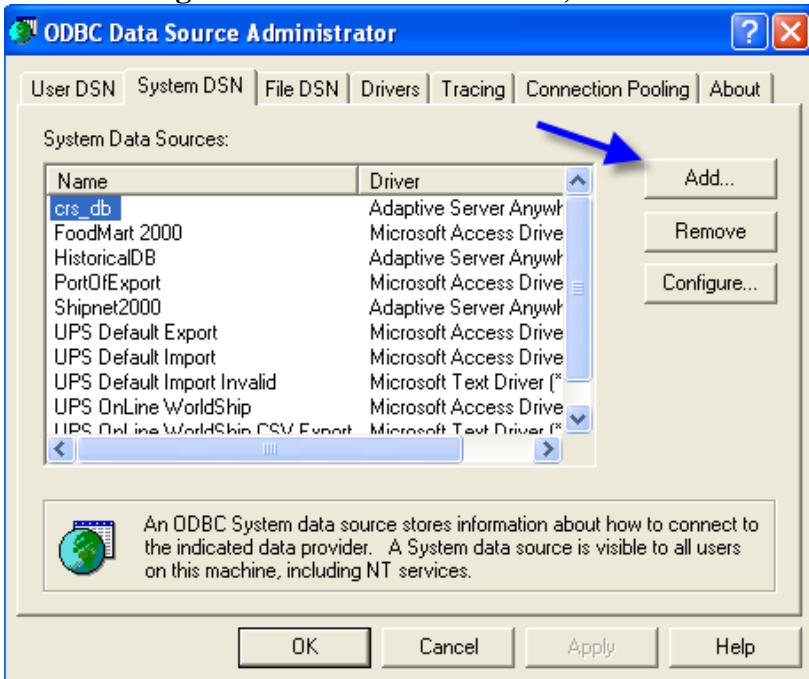
ODBC Connection Setup



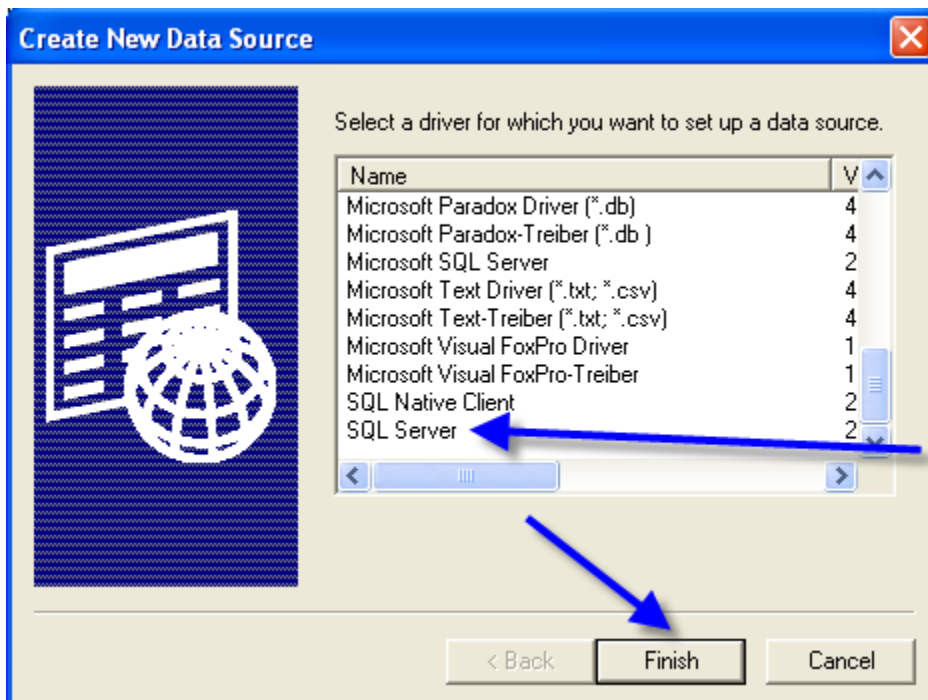
To access the ODBC Connection you will need to go To the start menu then to the control panel. From the control panel select the administrative tools button



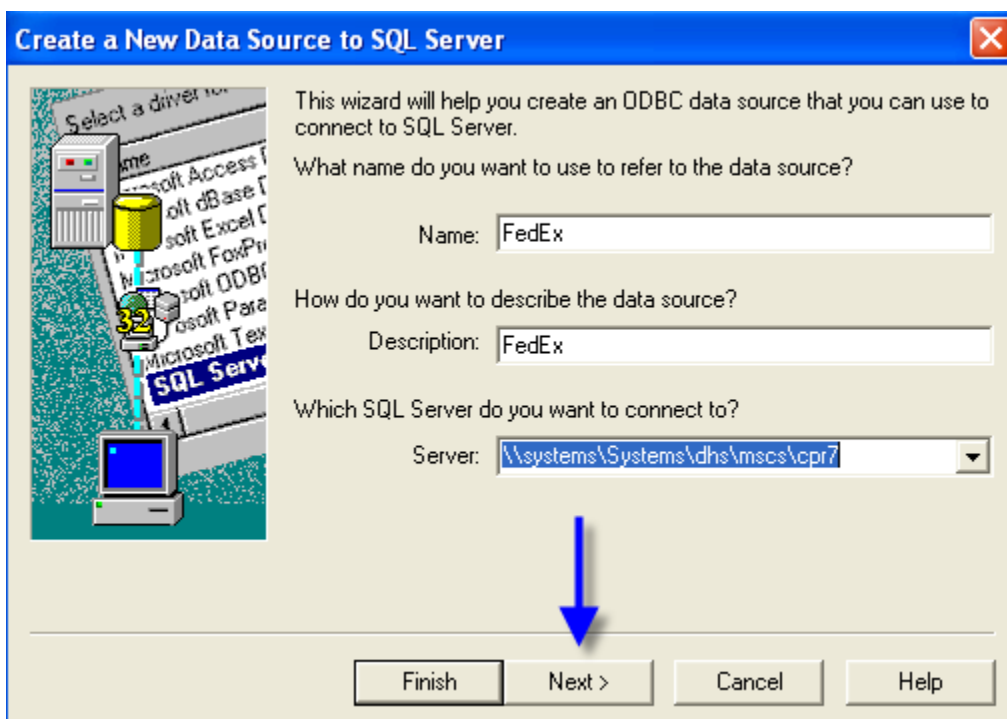
After clicking on the administrative tools, click on the data sources ODBC button



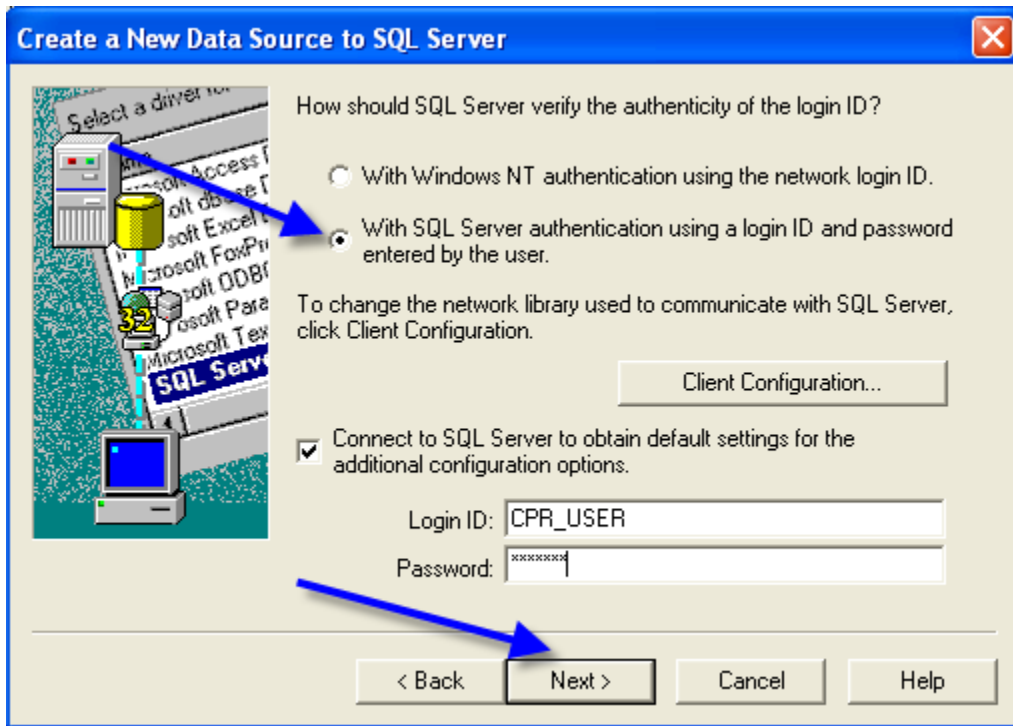
Go to the System DSN tab then click the ADD button



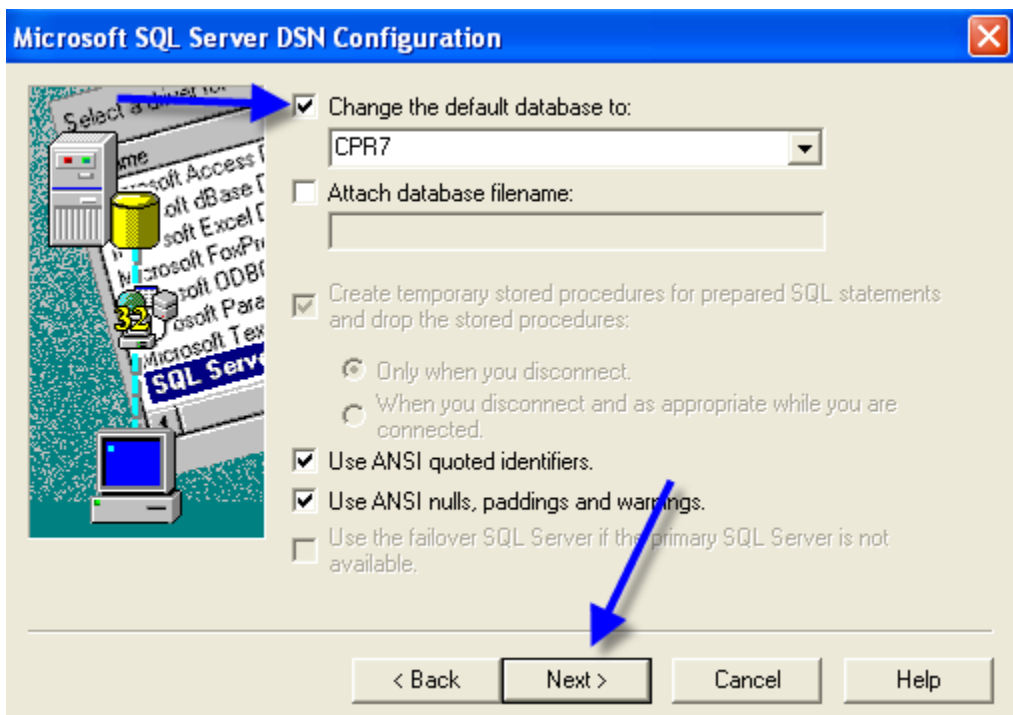
Next you will want to click on the SQL Server then Finish



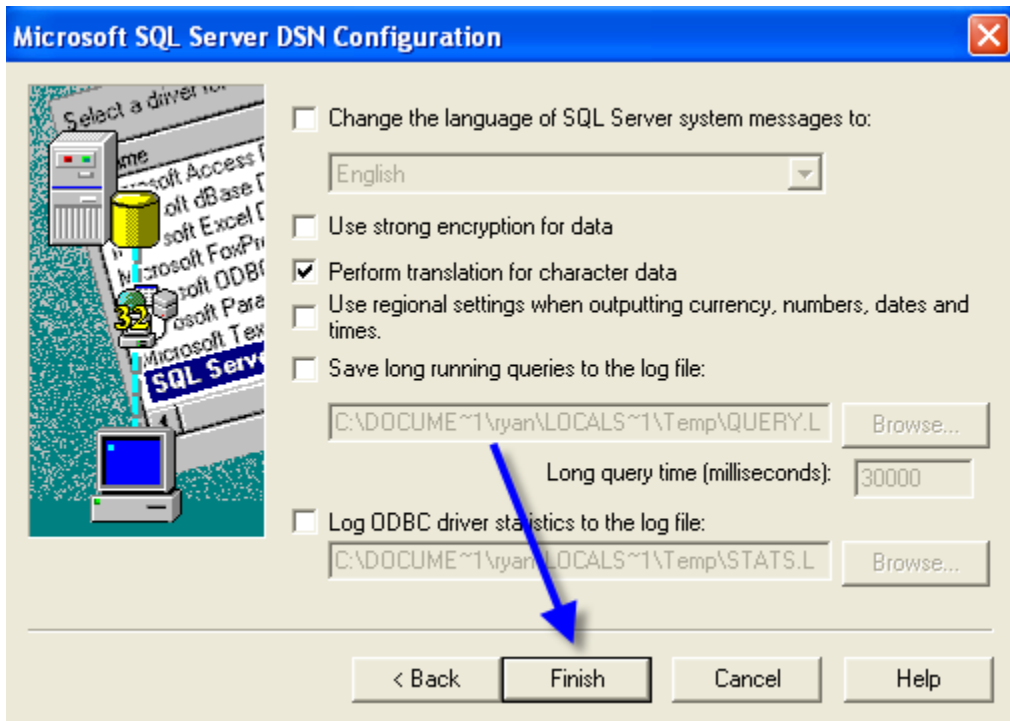
Fill out the above information with the users information. You can call the Name FedEx



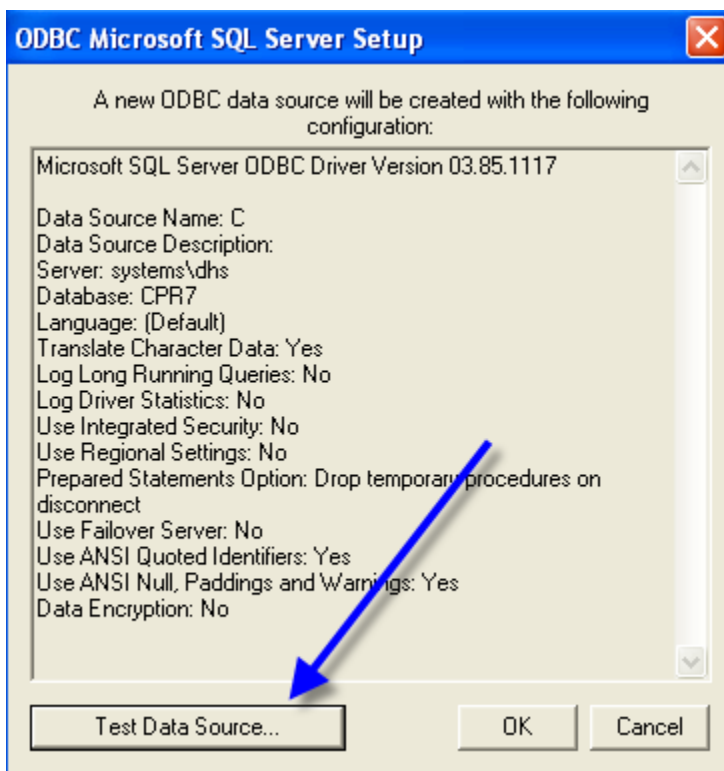
Log in with SQL Server auth and use the login CPR_USER and password cpruser



Change the default database to CPR7 and click Next



Then go ahead and click Finish



And test the data source to make sure that it works.